

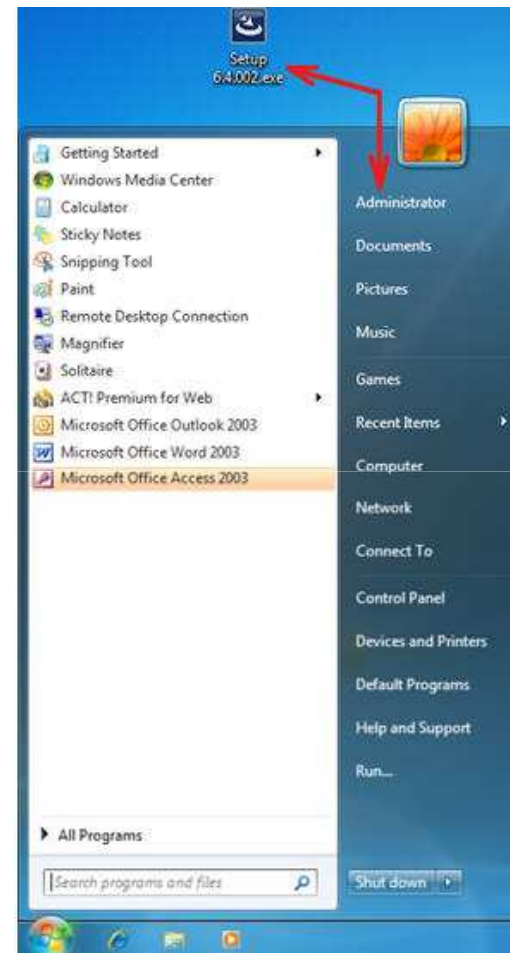
Installing QwikQuote on Windows 7



Run as Built in Administrator
Run as Administrator
Full Control Rights
Error 75
Running QwikQuote for the First Time
Administrator Credentials

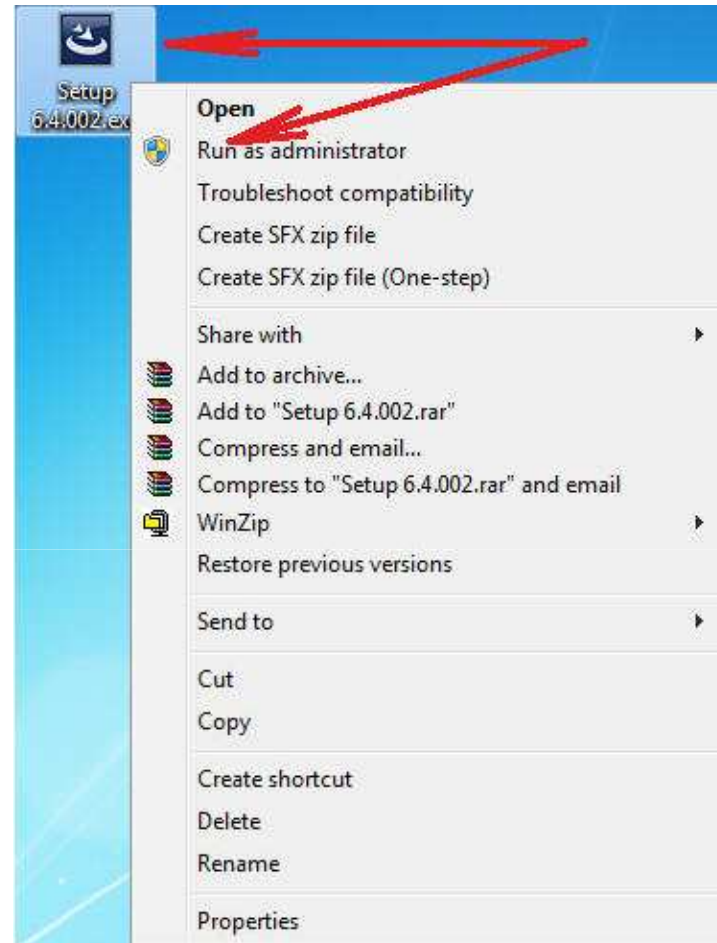
Run as Built in Administrator

- After you have download and saved the QwikQuote full setup executable file [Setup_6.4.002.exe](#), then the basic steps to install and run QwikQuote are:
- Either logon as the built-in Administrator to run QwikQuote setup:



Run as Administrator

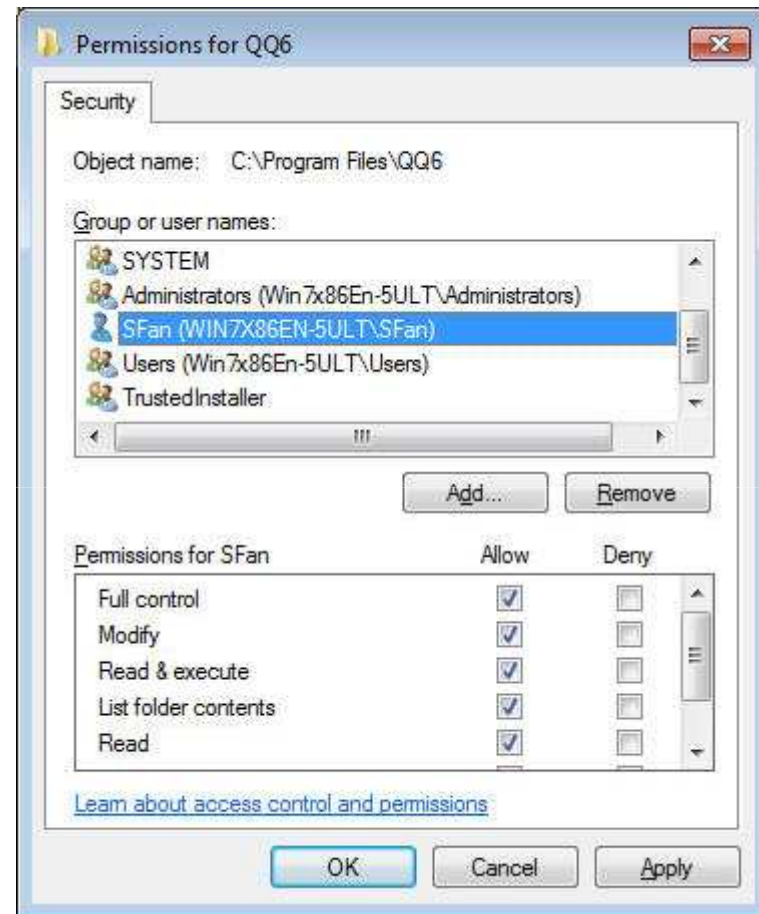
- Or run the install by using ‘Run as administrator.’ Just right mouse click the setup icon and choose ‘Run as administrator.’



Note: If you run the QwikQuote setup with another logon user name, or if you are not using the ‘Run as administrator’ popup menu command, some component may not be installed and registered correctly and you will get error messages.

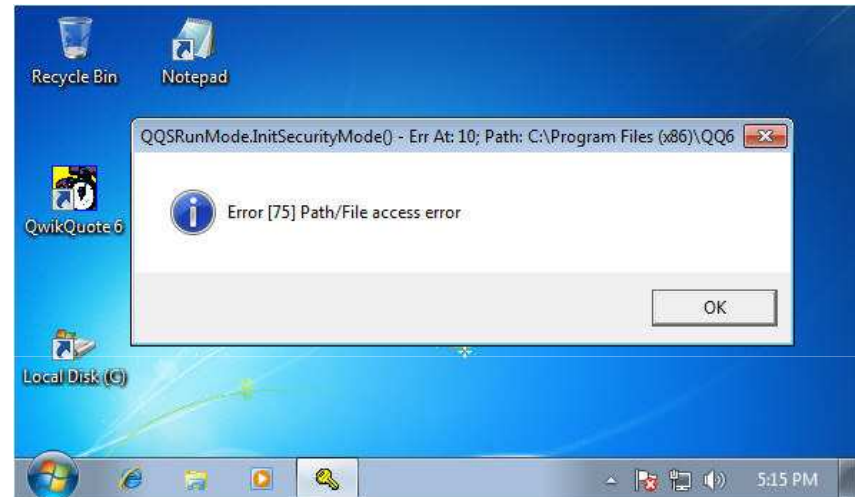
Full Control Rights

- After the installation is completed, you will still need to give the full control rights to all QwikQuote users over the QwikQuote main installation folder.
- The default will be at: C:\Program Files\QQ6 and C:\Program Files (x86)\QQ6 (on x64 computers)



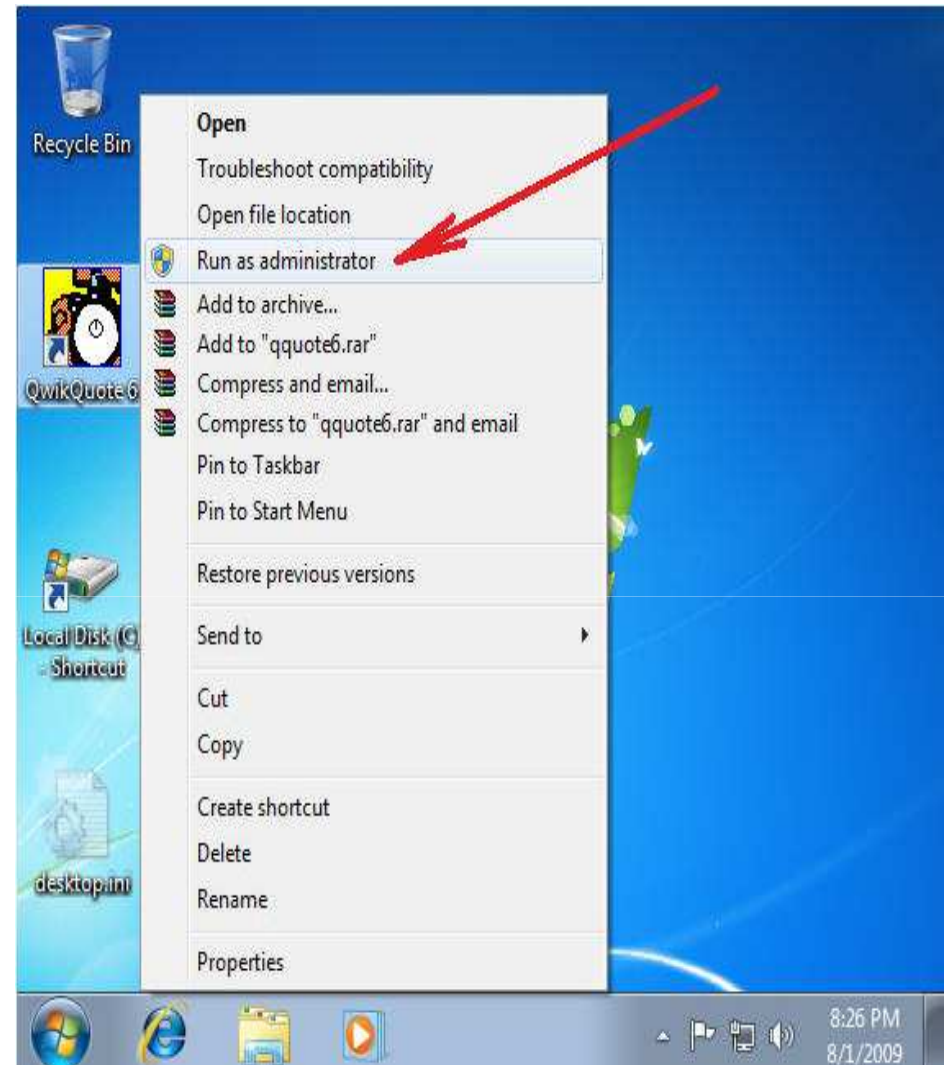
Error 75

- Otherwise, you may get an error when you try to run QwikQuote for the 1st time after installation that will lead you to run the QwikQuote Setup Wizard.



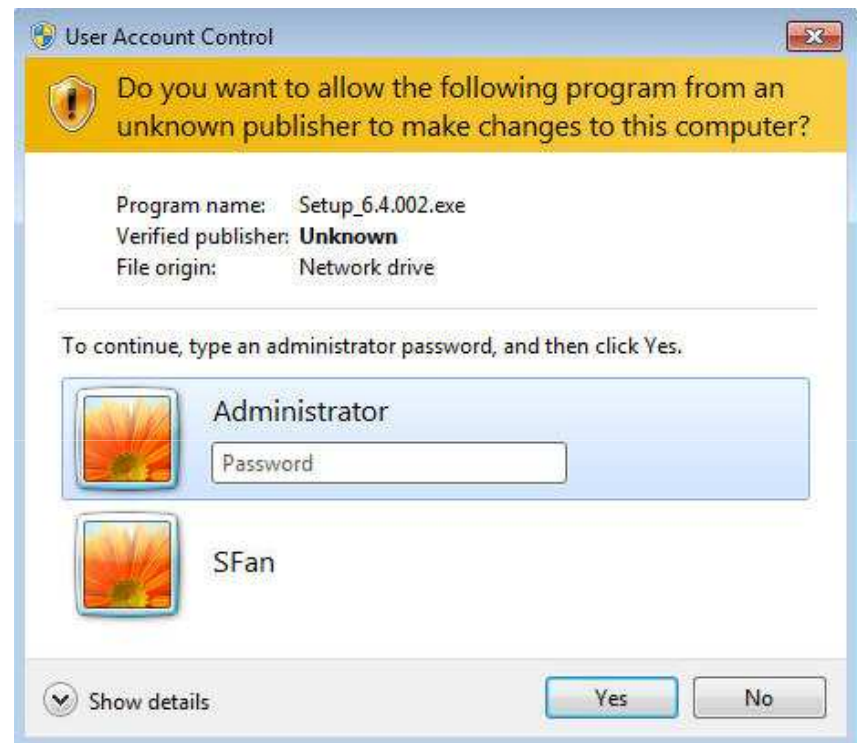
Running QwikQuote for the First Time

- The 1st time you run QwikQuote after completing the installation, either logon as built-in Administrator or use the 'Run as administrator.'
- The reason for this is because the 1st time you run QwikQuote you will need to run the QwikQuote Setup Wizard Configuration. This can only be done by the built-in Administrator logon rights in order to install/remove devices and modify system registry. Also, there are a group of OCX components that need to be registered themselves the first time through and that action needs Administrator rights.



Administrator Credentials

- If you are not logged on as a member of the Administrator User Group, i.e. suppose you logon as a Standard User, you will be asked to provide the Administrator credential to install QwikQuote.
- Note: In this case, as we said above, remember: Give all QwikQuote users the FULL Control rights to the QwikQuote installation folder.
- Or run QwikQuote the 1st time as Administrator.



After installing and configuring properly, other users can logon and run QwikQuote.